



3 0531 01052 0573

RUTH FAMILY GENEALOGY

JACOB RUTH - BARBARA STROHM

BRANCH No. 11

M
929.2
R932r
v. 3

RELATIONSHIPS

There are at least two accepted ways of figuring relationships. One is called the Common or Canon Law method, and the other the Civil Law method. Both agree when figuring the direct or lineal descent. They differ only in figuring the collateral relationships. As the Common or Canon Law method is now in general use and gives a more accurate description of "cousin relationship," we will not consider the Civil Law method, but present for your use a chart, especially prepared for this publication, which shows (according to the Common or Canon Law), the relationship of descendants to a progenitor to the tenth generation. Also the relationship between his descendants, in any combination of degrees from him, down to and including the tenth generation.

HOW TO USE RELATIONSHIP CHART

You will note that the two upper columns are outlined in heavy lines. These are the common progenitor and his descendants. "CP" stands for common progenitor, the one who is the head of the two lines of descendants. "S" is his son or daughter as the case may be; "GS" his grandson or granddaughter; "GGS" his great grandson or granddaughter; "2GGS" his second great grandson or granddaughter, and so on down to his eighth great grandson or granddaughter.

All the diamonds inside these heavy lines show the relationship between his descendants. By following columns "1" from both sides of the chart we find they cross on the "B" diamond, showing that the sons of the common progenitor are brothers. By following columns "2" to the center we find they cross at the "1C" diamond, indicating that grandsons of the common progenitor are first cousins to each other. And so on down: his great grandsons are second cousins; his second great grandsons are third cousins; his third great grandsons are fourth cousins, etc.

To this point few people have trouble in figuring relationships. It is when they start to figure the "cousinship" and "times removed" that they have difficulty. But with this chart you will find no trouble with any combination up to the tenth generation, and by following the pattern set by this chart you can go as many generations as you desire. Say you want to figure your relationship to a distant cousin. You are eight generations removed from the common progenitor, or his sixth great grandson. Your "distant cousin" is six generations removed or his fourth great grandson on another line. To figure your exact relationship simply follow columns "8" on the one side and "6" on the other to where they cross and you find "5C 2R" indicating you are fifth cousins twice removed.

If you want to find your relationship to the son of your fifth great grandfather, follow columns "1" and "7" which show you are his fourth great grandnephew (4 GGN). Likewise, you are a first cousin six times removed (1C 6R) to the grandson of your sixth great grandfather.

This method of figuring relationships is in general use by most courts of the country and was recently adopted for use of the patrons of the Genealogical Society of the Church of Jesus Christ of Latter-day Saints.

As additional aids to understanding terms used in relationship descriptions we give the following:

The parents of your father or mother are your grandfather or grandmother and you are a grandson to them. (GS)

The parents of your grandfather or grandmother are your great grandparents and you are a great grandson to them. (GGS)

The parents of your great grandmother or great grandfather are your second great grandparents and you are a second great grandson to them, etc., etc., (2GGS)

The children of your brothers and sisters are your nephews and neices (N) and you are uncle or aunt to them.

The children of your neices and nephews are your grandneices or grandnephews (GN) and you are granduncle to them.

The children of your grandnephews and grandneices are your great grandnephews or great grandneices (GGN) and you are great granduncle to them.

Your father's brother or sister is your uncle or aunt and you are a nephew or niece to them. (N)

The children of your uncle or aunt are your first cousins and you are also their first cousin. (1C)

The children of your first cousins are first cousins once removed to you and you are the same to them. (1C 1R)

The son of your third great grandfather is your second great granduncle and you are a second great grandnephew or niece to him.

The children of your second cousins are your second cousins once removed and you are the same to them.

The grandchildren of your second cousins are your second cousins twice removed and you are the same to them.

The great grand children of your second cousins are your second cousins thrice removed and you are the same to them.

The second great grandchildren of your second cousins are your second cousins four times removed and you are the same to them.

A simple formula for figuring cousin relationships by the above method is this: Call the common ancestor "0" and count down to the subjects; subtract one from the smaller of the two figures - this is the cousin relationship. Then subtract the smaller number from the larger and this gives you the times removed. Example: one subject is seven steps down from the common ancestor, the other is four steps down - one from four is three, so the cousinship is third cousins, and four from seven is three (three times removed) making them third cousins three times removed (3c3r).

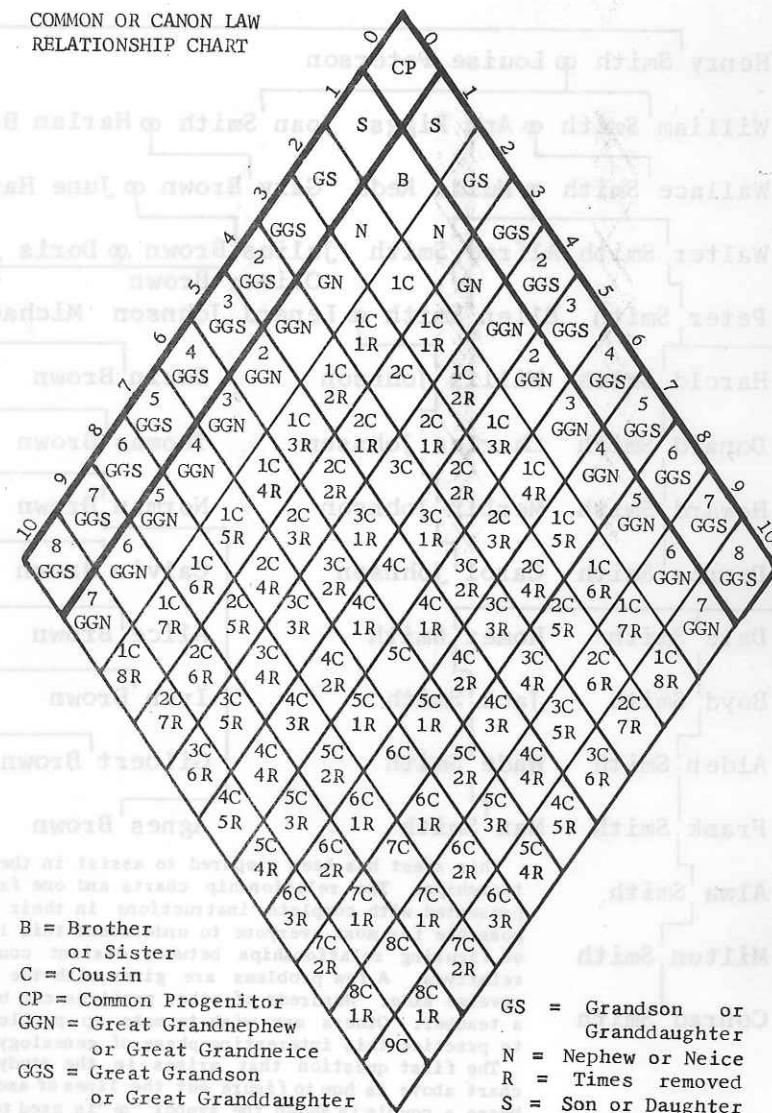
Another example:

Subject No. 1 is 9 steps down from the common ancestor.
Subject No. 2 is 6 steps down from the common ancestor.
6 - 1 = 5th cousin. 9 - 6 = 3 times removed. So they are fifth cousins three times removed. (5c3r).

Of course, if the steps down from the common ancestor are the same you simply subtract 1 from that number and it gives you their cousinship and there are no times removed to be figured. Remember also that the common ancestor is never counted when figuring the steps down to the subject, just as it appears on the chart.

Answers to problems on reverse side: 1) 5C 3R; 2) 5C 2R; 3) 7C 1R; 4) half 1C 1R; 5) step sisters; 6) 3C 1R; 7) 8GGN-i-1; 8) 4GGS.

COMMON OR CANON LAW
RELATIONSHIP CHART



B = Brother
or Sister
C = Cousin

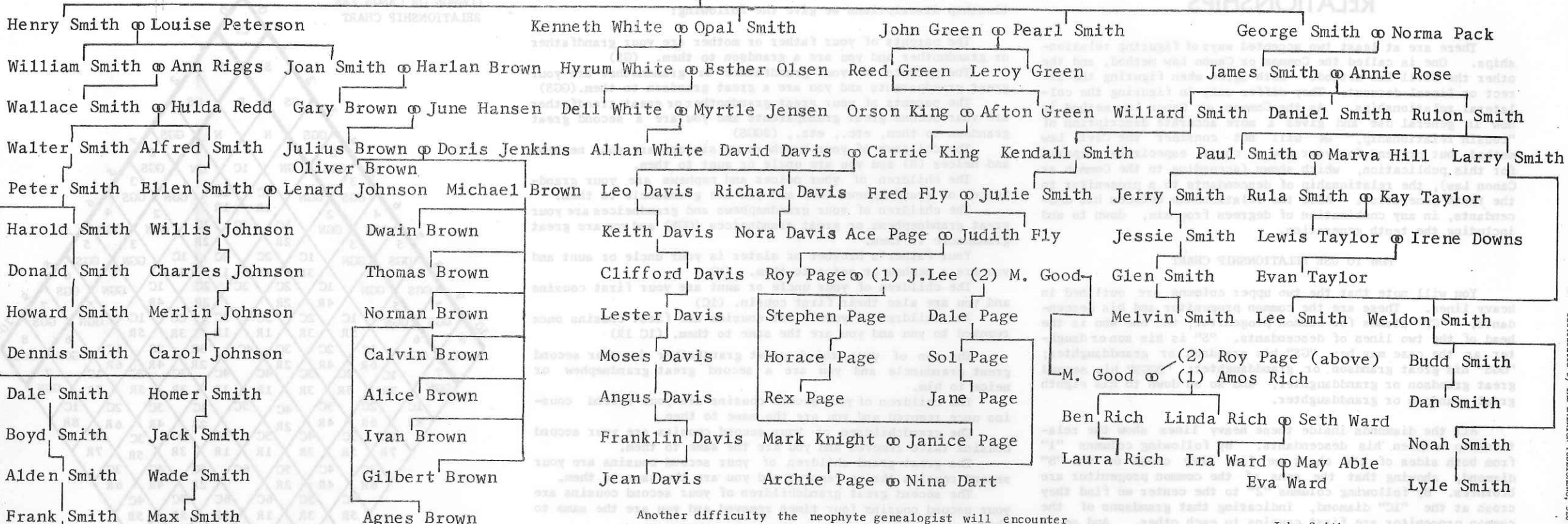
CP = Common Progenitor
GGN = Great Grandnephew
or Great Grandneice
GGS = Great Grandson
or Great Granddaughter

GS = Grandson or
Granddaughter
N = Nephew or Neice
R = Times removed
S = Son or Daughter

From
The
Improved
HOW BOOK
For
GENEALOGISTS

Copyright, 1959
by
THE EVERTON PUBLISHERS
526 North Main Street
Logan, Utah

John Smith ♂ Mary Gray



Alma Smith
Milton Smith
Conrad Smith

This sheet has been prepared to assist in the study of relationships. Two relationship charts and one family chart are presented with complete instructions in their use, making it possible for most everyone to understand this little known art of figuring relationships between distant cousins and other relatives. A few problems are given with the answers on the reverse side. Hundreds of other problems can be formulated by a teacher. Others may wish to make up problems on their own to practice this interesting phase of genealogy.

The first question that arises in the study of the family chart above is how to figure out the lines of ascent or descent. Where a couple is shown the symbol "⊕" is used to indicate their marriage and their children are indicated by lines from the symbol: Julius Brown ⊕ Doris Jenkins Fred Fly ⊕ Julie Smith Oliver Brown Michael Brown Judith Fly

Where the father only is shown, a line connects to his children: Reed Green Merlin Johnson Milton Smith Afton Green Carol Johnson Conrad Smith

Sometimes a circuitous line is drawn because of lack of space and you will find brothers and sisters on two or more different levels, yet connected by lines to their parent:

| | |
|--|---------------|
| Peter Smith | Michael Brown |
| Harold Smith | Dwain Brown |
| x x x | Thomas Brown |
| Dale Smith | Norman Brown |
| Homer Smith | Calvin Brown |
| Thus Harold, Dale and Homer are sons of Peter. And Dwain to Gilbert Brown are all children of Michael, full brothers and sister. | Alice Brown |
| | Ivan Brown |
| | Gilbert Brown |

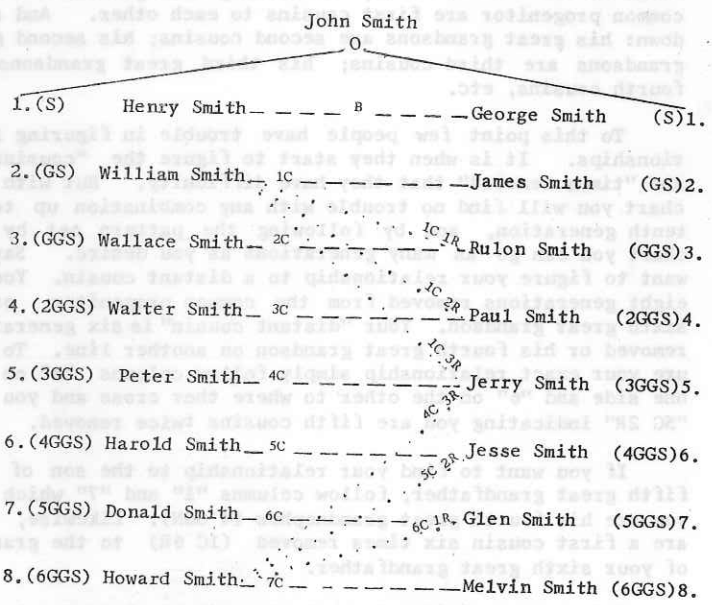
(Agnes Brown is the daughter of Norman Brown)

Another difficulty the neophyte genealogist will encounter is the problem of finding the common progenitor. Great care must be exercised in not going beyond him, as well as being sure you count each generation up to him. Counting just one step too few or too many will give you the wrong answer. In problem No. 1 below, the common progenitor is Wallace Smith as he is first one where the lines of Conrad Smith and Carol Johnson run together. And so it is in every case - the common progenitor is always that person or couple through whom relationship springs and who's sons and/or daughters head separate lines of descendants. Henry Smith is the common progenitor in problem No. 2, and John Smith is the common progenitor in No. 3.

After finding your common progenitor, call him "O" and count down first on one line to one of your subjects, then down the other line to the other subject. By using these two figures and the relationship chart on the reverse side it is easy to tell the exact relationship between them.

Regarding the descendants of Roy Page - the sons from the first and second wives are half brothers and their children are half first cousins and so on down. The same with the children of M. Good - Ben Rich and Dale Page are half brothers. Roy Page is the stepfather of Ben and Linda Rich, and Stephen Page is their stepbrother. Reference is seldom made to step-cousins, aunts, uncles, grandparents, etc., but these could be figured on the same basis as stepfather, mother, bro., or sis.

Problems: What is the relationship between 1) Conrad Smith & Carol Johnson; 2) Agnes Brown & Max Smith; 3) Dennis Smith & Janice Page; 4) Rex Page & Sol Page; 5) Janice Page & Linda Rich; 6) Allan White & Leo Davis? 7) What is the relationship of Milton Smith to John Green; 8) Gilbert Brown to Mary Gray?



Compare with chart above and chart on reverse side.

Distributed by THE EVERTON PUBLISHERS, 526 North Main, Logan, Utah.

| FAMILY OF <u>GERHARD RUTH</u> ADDRESS <u>HARXHEIM, PALATINATE AND EICHSTOCK, BAVARIA</u> NO. <u>1</u> | | | | | | |
|---|--|----------------------|----------------------|-------------------|------------|-----------------------|
| | Birth | Place of Birth | Church Membership | Date of Marriage | Occupation | Died |
| Father: GERHARD RUTH SON OF JOHANN JACOB RUTH AND ANNA CATHARINA JANSON | 3-12-1774 | HARXHEIM, PALATINATE | MENNONITE | 8-19-1798 | FARMER | 3-2-1834 |
| Mother: ELIZABETH RUPP DAU. OF DANIEL RUPP AND KATHARINA LINSCHIED | 9-1-1768 | HARXHEIM, PALATINATE | MENNONITE | 8-19-1798 | HOUSEWIFE | 9-18-1842 |
| No. | Children | Birth | Place of Birth | Church Membership | Died | Remarks |
| 11 | JACOB (M) | 6-15-1799 | HARXHEIM, PALATINATE | MENNONITE | 1-9-1848 | EICHSTOCK, BAVARIA |
| 12 | JOHANNES (M) | 1-22-1801 | HARXHEIM, PALATINATE | MENNONITE | 11-26-1855 | LEE COUNTY, IOWA |
| 13 | KATHERINE (F) | 2-22-1803 | HARXHEIM, PALATINATE | MENNONITE | 3-6-1861 | CHANNAHON, ILLINOIS |
| 14 | BARBARA (F) | 7-26-1804 | HARXHEIM, PALATINATE | MENNONITE | 8-22-1810 | HARXHEIM, PALATINATE |
| 15 | MARIE (F) | 12-22-1806 | HARXHEIM, PALATINATE | MENNONITE | 9-3-1869 | SUMMERFIELD, ILLINOIS |
| 16 | DAVID (M) | 12-10-1808 | HARXHEIM, PALATINATE | MENNONITE | 3-3-1867 | SUMMERFIELD, ILLINOIS |
| 17 | VERONICA (F) | 12-5-1811 | HARXHEIM, PALATINATE | MENNONITE | 10-2-1879 | SUMMERFIELD, ILLINOIS |
| 18 | SUSANNA (F) | 10-15-1815 | HARXHEIM, PALATINATE | MENNONITE | 2-23-1907 | SUMMERFIELD, ILLINOIS |
| | | | | | | |
| | NOTE: THE ABOVE BIRTH DATES ARE FROM THE FAMILY BIBLE | | | | | |
| | THE TREE SHOWS MARIE: 12-6-1806 | | | | | |
| | THE TREE SHOWS VERONICA: 11-16-1811 | | | | | |
| | MARRIED IN HARXHEIM ON THE PFRIMM, HARXHEIM, PALATINATE | | | | | |
| | BOTH PARENTS ARE BURIED IN THE EICHSTOCK CHURCHYARD CEMETERY, EICHSTOCK, BAVARIA | | | | | |

FAMILY OF JACOB RUTH **ADDRESS** HARRESZELL, BAVARIA **NO.** 11

| | Birth | Place of Birth | Church Membership | Date of Marriage | Occupation | Died |
|--|------------------------------|-------------------------|-------------------|------------------|------------|-----------|
| Father: SON OF GERHARD RUTH AND ELIZABETH RUPP | JACOB RUTH 6-15-1799 | HARXHEIM, RHEIN PFALZ | MENNONITE | 2-3-1829 | FARMER | 1-9-1848 |
| Mother: DAU. OF JOHANNES STROHM AND BARBARA LEHMANN | BARBARA STROHM 10-23-1807 | KRIEGSHEIM, KREIS WORMS | MENNONITE | 2-3-1829 | HOUSEWIFE | 1-27-1864 |

| No. | Children | Birth | Place of Birth | Church Membership | Died | Remarks |
|-----|---|------------|---------------------|-------------------|-----------|-----------------------|
| 111 | JOHANNES (M) | 12-1-1829 | HARRESZELL, BAVARIA | MENNONITE | 1-6-1835 | HARRESZELL, BAVARIA |
| 112 | JACOB (M) | 12-26-1832 | HARRESZELL, BAVARIA | MENNONITE | 1-22-1835 | HARRESZELL, BAVARIA |
| 113 | HENRY (SQUIRE) (M) | 1-26-1834 | HARRESZELL, BAVARIA | MENNONITE | 2-9-1919 | GOESSELS, KANSAS |
| 114 | DAVID B. (M) | 1-12-1836 | HARRESZELL, BAVARIA | MENNONITE | 1-28-1900 | SUMMERFIELD, ILLINOIS |
| 115 | MARY (F) | 10-25-1837 | HARRESZELL, BAVARIA | MENNONITE | 9-15-1902 | SUMMERFIELD, ILLINOIS |
| 116 | PETER B. (M) | 1-22-1840 | HARRESZELL, BAVARIA | MENNONITE | 1-9-1893 | SUMMERFIELD, ILLINOIS |
| 117 | SUSANNA (F) | 3-21-1842 | HARRESZELL, BAVARIA | MENNONITE | 7-4-1884 | MOUNDRIDGE, KANSAS |
| 118 | ANNA (F) | 7-25-1844 | HARRESZELL, BAVARIA | MENNONITE | 9-15-1878 | SUMMERFIELD, ILLINOIS |
| | THE CHILDREN, JOHANNES AND JACOB LIE BURIED AT EICHSTOCK, BAVARIA | | | | | |
| | BARBARA RUTH, NEE STROHM, THE WIDOW, MARRIED JOHN KRAEMER OF OBER FLOERSHEIM ON MAY 3-1852. | | | | | |
| | JACOB RUTH AND BARBARA STROHM WERE MARRIED IN THE BRIDES HOME ON THE SCHWAIG. | | | | | |
| | JACOB RUTH LIES BURIED IN THE EICHSTOCK KIRCHHOF, EICHSTOCK, BAVARIA. | | | | | |
| | BARBARA STROHM RUTH KRAEMER LIES BURIED IN THE SUMMERFIELD CEMETERY, SUMMERFIELD, ILLINOIS. | | | | | |

FAMILY OF JOHN KRAEMER ADDRESS SUMMERFIELD, ILLINOIS NO. 11

| SECOND MARRIAGE OF BARBARA STROHM | Birth | Place of Birth | Church Membership | Date of Marriage | Occupation | Died |
|---|------------|--------------------------------|-------------------|------------------|------------|-----------|
| Father: JOHN KRAEMER | 4-6-1822 | OBERFLOERSHEIM, RHEIN PFALZ | MENNONITE | 5-3-1852 | FARMER | 7-10-1893 |
| Mother: BARBARA STROHM RUTH DAU. OF JOHANNES STROHM AND BARBARA LEHMANN | 10-23-1807 | KRIEGSHEIM, KREIS WORMS | MENNONITE | 5-3-1852 | HOUSEWIFE | 1-27-1864 |

| No. | Children | Birth | Place of Birth | Church Membership | Died | Remarks |
|-----|---|-------|----------------|-------------------|------|---------|
| | NO ISSUE | | | | | |
| | IN SOME CASES, THE BIRTH OF JOHN KRAEMER IS GIVEN AS 9-26-1822. | | | | | |
| | THIS IS THE SECOND MARRIAGE OF BARBARA STROHM. | | | | | |
| | HER FIRST MARRIAGE WAS TO JACOB RUTH. TO THIS UNION THERE WERE BORN EIGHT CHILDREN. | | | | | |
| | AFTER THE DEATH OF HER HUSBAND, AND SHORTLY BEFORE COMING TO AMERICA, SHE MARRIED JOHN KRAEMER. | | | | | |
| | AFTER HER DEATH, JOHN KRAMER, THE WIDOWER, MARRIED BARBARA STROHM, NEE SCHOWALTER, | | | | | |
| | THE WIDOW OF PETER STROHM. THEY WERE MARRIED ON DECEMBER 2, 1866. | | | | | |
| | BARBARA STROHM RUTH KRAEMER IS BURIED IN THE SUMMERFIELD CEMETERY AT SUMMERFIELD, ILLINOIS | | | | | |
| | JOHN KRAEMER AND HIS SECOND WIFE, BARBARA SCHOWALTER STROHM KRAEMER ARE BURIED IN THE | | | | | |
| | HALSTEAD KANSAS CEMETERY AT HALSTEAD, KANSAS. | | | | | |
| | THE COUPLE WAS MARRIED BY REVEREND DAVID RUTH. | | | | | |
| | | | | | | |

HENRY (SQUIRE) RUTH-MARIE KATHERINE BAUCHENZ FAMILY
FIRST MARRIAGE OF HENRY (SQUIRE) RUTH

A SYNOPSIS OF THE LIFE OF

HENRY (SQUIRE) RUTH

Henry Ruth was born in Harreszell, Upper Bavaria, on January the twenty sixth in the year of 1834.

He was a son of Jacob Ruth and Barbara Strohm. He grew to manhood in his parent's home in Harreszell. In the year of 1846, at the age of twelve, Henry and his brother David, together with one of their hired-men, drove over to Marienbrun to visit their father, who was there to take some baths for his health. The trip was an unlucky one for Henry for he accidentally injured his foot. It was an injury which caused him quite a lot of trouble for the rest of his life. The details are in the history section of the genealogy.

In the year of 1851, the Johannes Krehbiel family went to America and Henry Ruth went along with them. They left home on the twenty first of March and they landed in New York on the fourth of August, 1851.

Henry Ruth could not do heavy work so he learned the cabinet and furniture making trade. He also took up the carpenters trade.

He received the name "Squire" because of the fact that he was a Justice of the Peace for some time. It is born out by the fact that some of the early deeds connected with the Ruth estate were notarized by him and bear his signature and his title.

In the book "A History of Saint Clair County", by McDonough, we are told that Henry Ruth was among the first settlers of Summerfield, Illinois.

We do not know on what date Henry Ruth settled in Summerfield, Illinois. We do know that he worked in the Lebanon Post Office in the spring of 1854.

On the twenty eighth day of April in the year of 1856, Henry Ruth, Jacob and Gerhard Vogt purchased a lot in Summerfield for the sum of \$50.00. They built a shop on it and the three of them started a cabinet and furniture making business.

On the fifth day of February in the year of 1857, Henry Ruth was married to Katherine Marie Bauchenz. She was a sister of Philip Bauchenz, the wagon maker in Summerfield. They were married in Saint Louis.

In the year of 1858, Henry built himself a large house in Summerfield. It was two stories high with a store, six rooms, a basement and a porch. He erected it upon two lots. The lots cost him \$180.00 and the house cost him \$1,800.00. He rented a part of it out at a cost of \$19.00 per month and lived in a part of the house himself. He also had a large garden and a yard. (John Appel used to live in this house.)

Henry Ruth operated a lumber yard in Summerfield for a long time. (We could not locate the dates.)

In 1880, Henry Ruth and Whitaker erected a grain elevator just east and a little south of the depot. It was constructed to handle all sorts of grain and it had a capacity of 5000 bushels of grain.

For all but a few days less than three months of the last seventeen years of his life he lived in the home of his oldest son, John W., of Perry, Oklahoma. Here, his daughter-in-law, Susan, Nee Dester, made a good home for him.

On the twenty second day of November in the year of 1918, Henry went to the Bethesda Old Peoples Home in Goessels, Kansas. Here, he would receive the best of care for the rest of his life. He passed away on the ninth of February in the year of 1919. He was in church in the morning and in the evening he received his call to go to his heavenly home. His earthly remains rest in the Halstead Cemetery.

He was survived by two daughters, Anna Embick and Emma A. Rowland, two sons, John W. and Henry Herman, seven grand children and seven great grand children.

He was musically inclined and could play several instruments. Toward last he concentrated his efforts on the Ocarina and always carried four or five with him when-ever he went visiting.

June 21, 1960.

By Albert J. Ruth.

FAMILY OF HENRY (SQUIRE) RUTH **ADDRESS** SUMMERFIELD, ILLINOIS **NO.** 113

| FIRST MARRIAGE OF HENRY (SQUIRE) RUTH | Birth | Place of Birth | Church Membership | Date of Marriage | Occupation | Died |
|---|-----------|----------------------|-------------------|------------------|---|----------|
| Father: HENRY (SQUIRE) RUTH SON OF JACOB RUTH AND BARBARA STROHM | 1-26-1834 | HARRESZELL, BAVARIA | MENNONITE | 2-5-1857 | NOTARY PUBLIC CABINET MAKER AND CARPENTER | 2-9-1919 |
| Mother: MARIE KATHERINE BAUCHENZ | 12-9-1836 | BISCHEIM, PALATINATE | MENNONITE | 2-5-1857 | HOUSEWIFE | 9-1-1865 |

| No. | Children | Birth | Place of Birth | Church Membership | Died | Remarks |
|------|--|------------|-----------------------|-------------------|------------|-----------------------|
| 1131 | JOHN W. (M) | 1-18-1858 | SUMMERFIELD, ILLINOIS | MENNONITE | 11-14-1931 | REEDLEY, CALIFORNIA |
| 1132 | ANNA MARIA (F) | 11-18-1859 | SUMMERFIELD, ILLINOIS | MENNONITE | 7-16-1942 | HALSTEAD, KANSAS |
| 1133 | EMMA AMELIA (F) | 10-25-1861 | SUMMERFIELD, ILLINOIS | MENNONITE | 7-7-1951 | LITTLE RIVER, KANSAS |
| 1134 | HENRY HERMAN (M) | 10-18-1863 | SUMMERFIELD, ILLINOIS | MENNONITE | 1-17-1926 | EUGENE, OREGON |
| 1135 | KATHERINE M. (F) | 8-16-1865 | SUMMERFIELD, ILLINOIS | | 9-4-1865 | SUMMERFIELD, ILLINOIS |
| | | | | | | |
| | IN SOME INSTANCES THE DATE OF MARRIAGE IS GIVEN 2-5-1856. | | | | | |
| | | | | | | |
| | HENRY (SQUIRE) RUTH DIED AT GOESSEL, KANSAS IN THE BETHESDA HOME FOR THE AGED. | | | | | |
| | | | | | | |
| | MARRIED IN SAINT LOUIS, MISSOURI | | | | | |
| | FATHER: BURIED IN THE HALSTEAD CEMETERY AT HALSTEAD, KANSAS. | | | | | |
| | MOTHER: BURIED IN THE SUMMERFIELD CEMETERY, SUMMERFIELD, ILLINOIS. | | | | | |

HENRY (SQUIRE) RUTH-ELLEN HINDS FAMILY
SECOND MARRIAGE OF HENRY (SQUIRE) RUTH

FAMILY OF HENRY (SQUIRE) RUTH ADDRESS SUMMERFIELD, ILLINOIS NO. 113

| SECOND MARRIAGE OF HENRY (SQUIRE) RUTH | Birth | Place of Birth | Church Membership | Date of Marriage | Occupation | Died |
|--|-----------|---------------------|-------------------|------------------|--------------------------------|-----------|
| Father: HENRY (SQUIRE) RUTH SON OF JACOB RUTH AND BARBARA STROHM | 1-26-1834 | HARRESZELL, BAVARIA | MENNONITE | 8-29-1866 | CABINET MAKER AND CARPENTER | 2-9-1919 |
| Mother: ELLEN PERCY HINDS | 7-15-1844 | | | 8-29-1866 | HOUSEWIFE | 6-16-1897 |

| No. | Children | Birth | Place of Birth | Church Membership | Died | Remarks |
|-------|--|-----------|-----------------------|-------------------|-----------|-----------------------|
| 11336 | NETTIE EVA (F) | 11-1-1868 | SUMMERFIELD, ILLINOIS | | 5-26-1869 | SUMMERFIELD, ILLINOIS |
| | | | | | | |
| | | | | | | |
| | HENRY (SQUIRE) RUTH DIED IN GOESSELS, KANSAS IN THE BETHESDA HOME FOR THE AGED | | | | | |
| | HIS BODY LIES BURIED IN THE HALSTEAD, CEMETERY, HALSTEAD, KANSAS | | | | | |
| | | | | | | |
| | | | | | | |
| | | | | | | |
| | MARRIED IN LEBANON, ILLINOIS | | | | | |
| | | | | | | |
| | | | | | | |

JOHN W. RUTH-SUSAN DESTER FAMILY
FIRST MARRIAGE OF JOHN W. RUTH

A SYNOPSIS OF THE LIFE OF

JOHN W. RUTH

John W. Ruth was born at Summerfield, Illinois on the eighteenth day of January in the year of 1858.

He was a son of Henry (Squire) Ruth and Katherine Marie Bauchenz. He spent his childhood days here and also grew into manhood in this area.

On the twenty ninth of August in the year of 1894 he married Susan Dester in the home of Reverend Carl Van der Smissen in Summerfield, Illinois.

Susan Dester was born on the twenty ninth of June in the year of 1862. She was born in Thann, Bavaria, a daughter of Jacob Dester and Susanna Hirschler.

He was a coach and cabinet maker by trade and was employed by the Pullman Company at Pullman, Illinois and by the Sante Fe Railroad in Topeka, Kansas.

Some time later, he did some farming near Topeka, Kansas. From here they moved to Perry, Oklahoma and operated a dairy and chicken farm.

In the year of 1919 he retired and they moved to Reedley, California.

His wife passed away in Reedley on the fourteenth of November in the year of 1922.

On July the seventh, in the year of 1927, John W. Ruth married Elizabeth Hirschler in Reedley. She was a daughter of Ulrich Hirschler and Magdalena Dester, born at Hammerhof, Bayern on the nineteenth of June, in the year of 1885.

John W. Ruth passed away peacefully in Reedley on the fourteenth day of November in the year of 1931. His earthly remains rest in Reedley, California.

The first wife of John W. Ruth was an Aunt to his second wife. Susan was a sister of Magdalena Dester who married Ulrich Hirschler.

Elizabeth Ruth, Nee Hirschler, the second wife of John W. Ruth is still living at this writing.

February 2, 1960.

By Albert J. Ruth.

JOHN W. RUTH-ELIZABETH HIRSCHLER FAMILY
SECOND MARRIAGE OF JOHN W. RUTH.

FAMILY OF JOHN W. RUTH **ADDRESS** REEDLEY, CALIFORNIA **NO.** 1131

| FIRST MARRIAGE | Birth | Place of Birth | Church Membership | Date of Marriage | Occupation | Died |
|--|-----------|-----------------------|-------------------|------------------|---------------|------------|
| Father: JOHN W. RUTH SON OF HENRY (SQUIRE) RUTH AND MARIE KATHERINE BAUCHENZ | 1-18-1858 | SUMMERFIELD, ILLINOIS | MENNONITE | 8-29-1894 | CABINET MAKER | 11-14-1931 |
| Mother: SUSAN DESTER DAU. OF JACOB DESTER AND SUSANNA HIRSCHLER | 3-29-1862 | THANN, BAVARIA | MENNONITE | 8-29-1894 | HOUSEWIFE | 11-14-1922 |

| No. | Children | Birth | Place of Birth | Church Membership | Died | Remarks |
|-----|---|-------|----------------|-------------------|------|---------|
| | NO ISSUE | | | | | |
| | SUSAN DESTER, THE FIRST WIFE OF JOHN W. RUTH, WAS A SISTER OF MAGDALENA DESTER, THE MOTHER OF ELIZABETH HIRSCHLER WHO BECAME THE SECOND WIFE OF JOHN W. RUTH. | | | | | |
| | | | | | | |
| | | | | | | |
| | | | | | | |
| | | | | | | |
| | | | | | | |
| | | | | | | |
| | | | | | | |
| | MARRIED IN SUMMERFIELD, ILLINOIS, IN THE HOME OF REVEREND VAN DER SMISSEN, BY REVEREND VAN DER SMISSEN. | | | | | |
| | JOHN W. RUTH IS BURIED IN REEDLEY, CALIFORNIA. | | | | | |
| | SUSAN DESTER RUTH IS BURIED IN REEDLEY, CALIFORNIA. | | | | | |

HENRY EMBICK-ANNA RUTH FAMILY

FAMILY OF HENRY SAMUEL EMBICK **ADDRESS** HALSTEAD, KANSAS **NO.** 1132

| | Birth | Place of Birth | Church Membership | Date of Marriage | Occupation | Died |
|--|------------|-----------------------|-------------------|------------------|--------------------|------------|
| Father: HENRY SAMUEL EMBICK SON OF SAMUEL EMBICK | 4-2-1847 | LEBANON, PENNSYLVANIA | LUTHERN | 1888 | BUTCHER SHERIFF | 12-27-1927 |
| Mother: ANNA MARIA RUTH DAU. OF HENRY (SQUIRE) RUTH AND MARIE KATHERINE BAUCHENZ | 11-18-1859 | SUMMERFIELD, ILLINOIS | MENNONITE | 1888 | HOUSEWIFE | 7-16-1942 |

| No. | Children | Birth | Place of Birth | Church Membership | Died | Remarks |
|-------|--|-----------|------------------|-------------------|-----------|--------------------|
| 11321 | HENRY SAMUEL (M) | 6-11-1890 | HALSTEAD, KANSAS | METHODIST | 10-4-1945 | HUTCHINSON, KANSAS |
| 11322 | MARIA (MARY) ANN (F) | 3-26-1892 | HALSTEAD, KANSAS | NONE | | |
| | | | | | | |
| | | | | | | |
| | ANNA MARIA WAS IN THE BETHEL HOME AT THE TIME OF HER DEATH | | | | | |
| | | | | | | |
| | | | | | | |
| | | | | | | |
| | | | | | | |
| | | | | | | |
| | | | | | | |
| | FATHER BURIED AT HALSTEAD, KANSAS | | | | | |
| | MOTHER BURIED AT HALSTEAD, KANSAS | | | | | |

